

PRODUCT



DESCRIPTION

- Opening angle:107°
- Cabinet width up to 1200mm
- Cabinet height:250~600mm
- Door thickness:16~28mm
- 3D door adjustments:
Height adjustment: +/-2mm,
Depth adjustment: +/-2mm,
Side adjustment: +/-2mm,
- Handle-less, stays at any desired position
- Adjustable hovering forces
- Tool free assembly and removal
- Single and dual-colour caps at your disposal

Power factor LF=

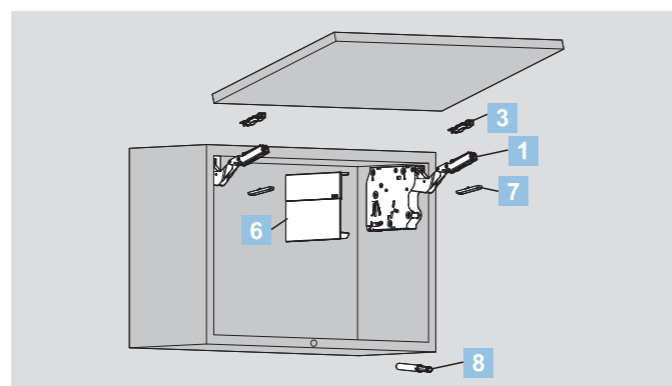
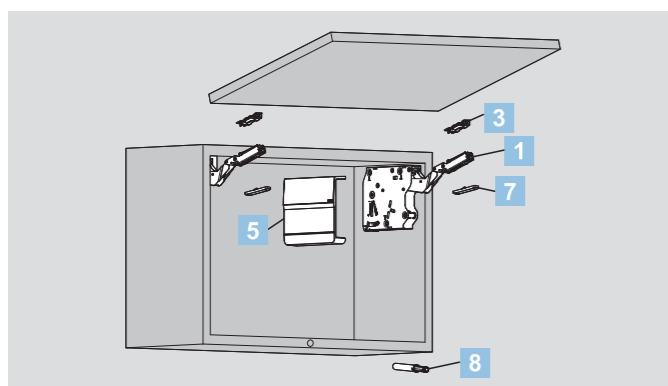
Cabinet height KH(mm) x door weight incl(kg)

Note: The power factor LF and the door weight can be increased by 50% when a third lift mechanism is used.

ORDER INFORMATION

1		Lift Mechanism set/ Industrial Package			
		Opening angle:107°			
		Power Factor LF	Dynamic	Item No.	Set/ctn
		580-1350	Light	SQ2FBL	10
		1060-2450	Medium	SQ2FBM	10
		1800-4000	Strong	SQ2FBH	10
		2600-5000	Extra Strong	SQ2FBC	10
3		Front Fixing-brackets set/Industrial Package			
		For Wooden Door and Wide Alu Frames			
		Nickel Plated(A01)			
		Item No.	SQ00YQ		
		Set/ctn	200		
5		Single Caps(left/right) / Industrial Package			
		Plastic			
		Colour	Item No.	Set/ctn	
		White	SQJS03A	20	
		Grey	SQJS03B	20	
7		Decoration cover for hinge arm /Industrial Package			
		Nickel Plated(A01)			
		Item No.	Set/ctn		
		S15H	4000		

2		Opening angle restriction clip / Industrial Package		
		Plastic		
		Dark grey (H11)		
		Opening angle	Item No.	Pcs/ctn
		100°	SQW100	1000
		75°	SQW75	1000
4		Narrow Alu Frame fixing-brackets set		
		Industrial Package		
		For Narrow Alu Frames		
		Nickel Plated(A01)		
		Item No.	SQ00H	
		Set/ctn	100	
		10 pcs Φ3.5X8.5mm countersunk screws included		
6		Dual-colour Caps(left/right) / Industrial Package		
		Plastic		
		Colour	Item No.	Set/ctn
		White+ light grey	SQJS04A	20
		Grey+ dark grey	SQJS04B	20
		White+ nickel plated	SQJS04C	20
		Grey+ nickel plated	SQJS04D	20
8		Insert-type Magnetic Push Latch/Industrial Package		
		Item No.		
		MS-A011A	200	
		Pcs/ctn	200	
		Alternative:Push Latch see page 200		



ORDER INFORMATION

T1 Single Caps-Recommended Kit Package

Including:

1x lift mechanism set	1x single caps set	1x front fixing-brackets set	2X Decoration cover for hinge arm	1X Insert-type Magnetic Push Latch	6x wooden screw	5x wooden screw

Please select the corresponding kit package item No. according to power factor and cabinet height

Power Factor(LF)	Cabinet Height	Kit package item No.(white single caps)	Kit package item No.(grey single caps)
580-1350	250-400mm	SQ2FBL03A	SQ2FBL03B
1060-2450	250-500mm	SQ2FBM03A	SQ2FBM03B
1800-4000	250-500mm	SQ2FBH03A	SQ2FBH03B
2600-5000	350-600mm	SQ2FBC03A	SQ2FBC03B

T2 Dual-colour Caps-Recommended Kit Package

Including:

1x lift mechanism set	1x dual-colour caps set	1x front fixing-brackets set	2X Decoration cover for hinge arm	1X Insert-type Magnetic Push Latch	6x wooden screw	5x wooden screw

Please select the corresponding kit package item No. according to power factor and cabinet height

Power Factor(LF)	Cabinet Height	Kit package item No.(White+ light grey caps)	Kit package item No.(Grey+ dark grey caps)
580-1350	250-400mm	SQ2FBL04A	SQ2FBL04B
1060-2450	250-500mm	SQ2FBM04A	SQ2FBM04B
1800-4000	250-500mm	SQ2FBH04A	SQ2FBH04B
2600-5000	350-600mm	SQ2FBC04A	SQ2FBC04B

Please select the corresponding kit package item No. according to power factor and cabinet height

Power Factor(LF)	Cabinet Height	Kit package item No.(White+ nickel plated caps)	Kit package item No.(Grey+ nickel plated caps)
580-1350	250-400mm	SQ2FBL04C	SQ2FBL04D
1060-2450	250-500mm	SQ2FBM04C	SQ2FBM04D
1800-4000	250-500mm	SQ2FBH04C	SQ2FBH04D
2600-5000	350-600mm	SQ2FBC04C	SQ2FBC04D

In the case of narrow alu frame application,order fixing-brackets SQ00H separately.

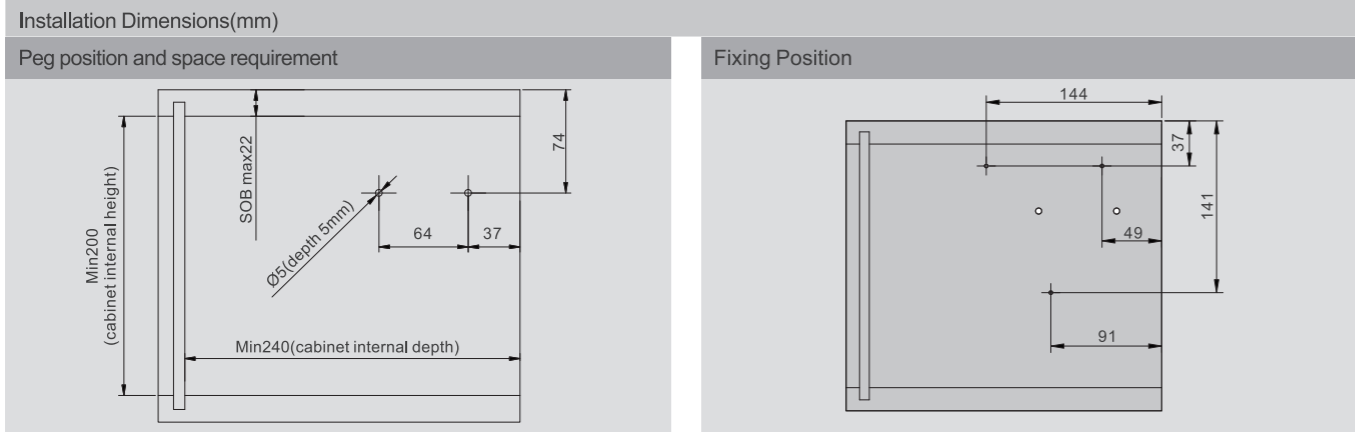
TOP-STAYS

SQ Series Push-open Lifting System

TOP-STAYS

Assembly, Removal and Adjustment (for SQ Series Push-open Lifting System)

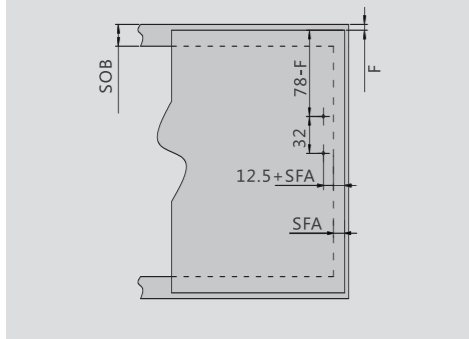
PLANNING



SOB: top panel thickness

4x wooden screws Ø4X38mm

Door planning and assembly- wooden doors and wide alu frames

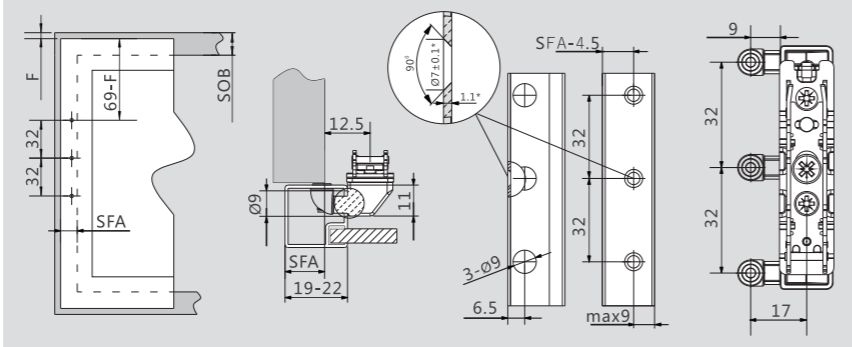


4 wooden screws for wooden doors (Ø4X16mm)

SFA: door overlay of the side panel

F: gap

Door planning and assembly- narrow alu frames

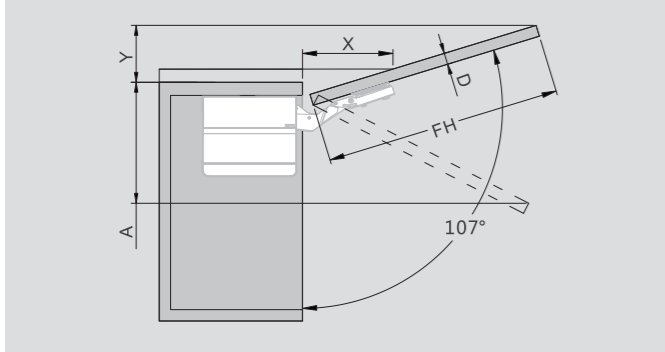


Frame width(mm)	19	20	21	22
SFA(mm)	15~19	16~20	17~21	18~22

10 countersunk screws for narrow alu frames (Φ3.5X8.5mm)

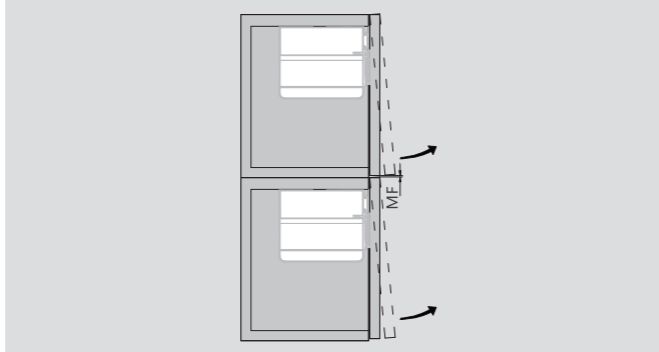
*When changing material thickness, adjust the assembly dimensions accordingly

Cornice/crown moulding clearance



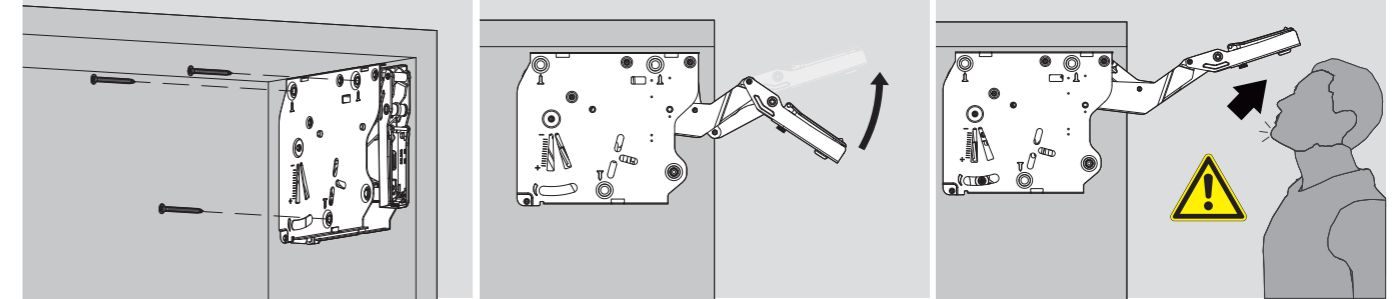
D(mm)	16	19	22	26	28
X(mm)	70	58	49	35	26
Opening angle restriction	Space requirement (mm)				
without	$Y = FH \times 0.29 - 15 + D$				
100°	$Y = FH \times 0.17 - 15 + D$				
75°	$A = FH \times 0.26 + 15 - D$				

Minimum gap



MF: Minimum gap 2mm

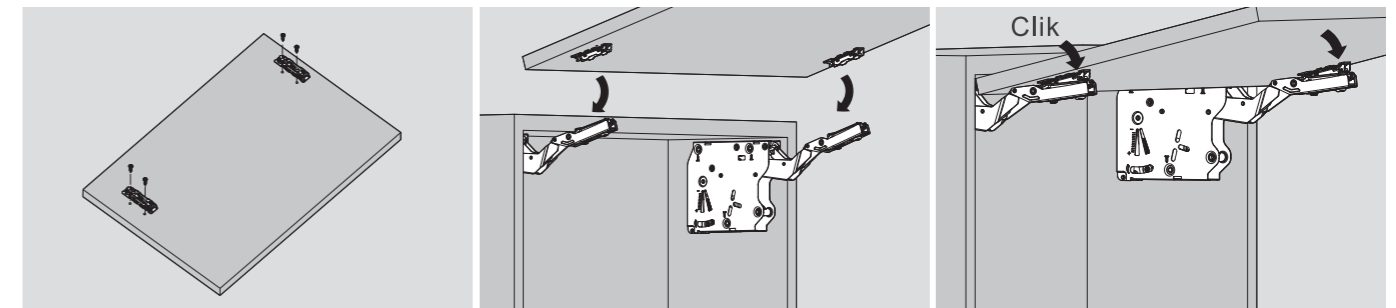
Assembly



Assembly

Caution when opening arm

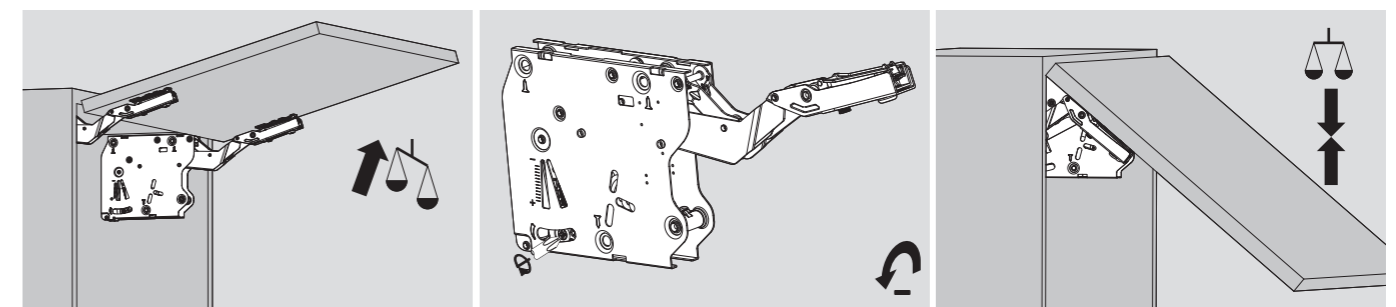
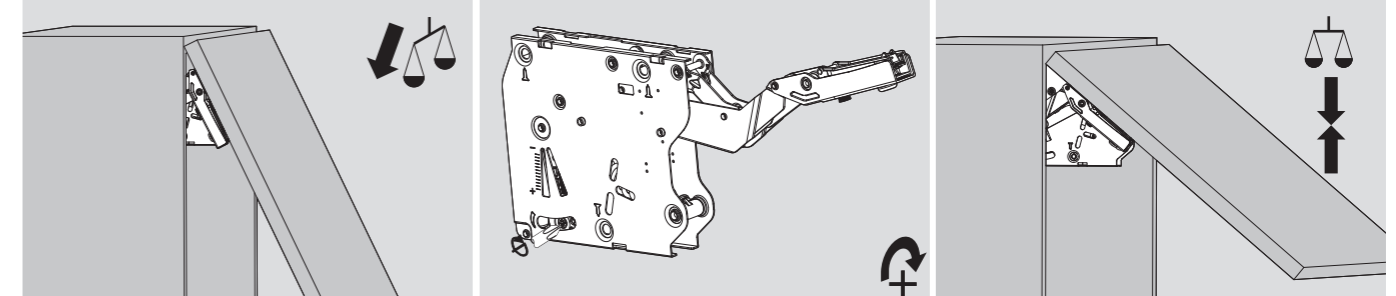
The arm of this device could spring up and cause injury. Do not push the arm down without door attached.



Panel Fastener Installation

Door Assembly

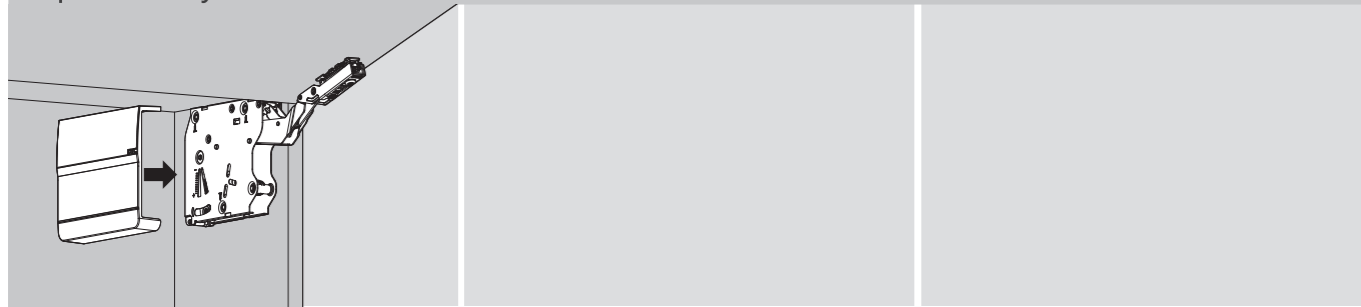
Hovering Adjustment



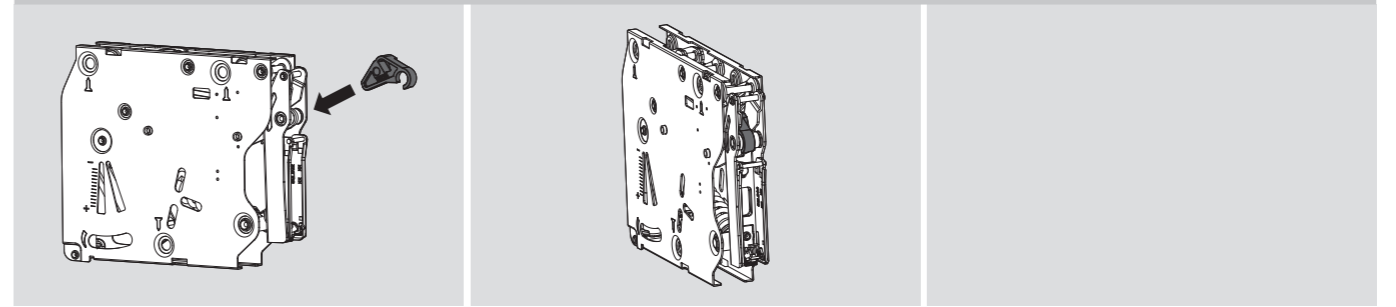
TOP-STAYS

Assembly , Removal and Adjustment(for SQ Series Push-open Lifting System)

Caps Assembly

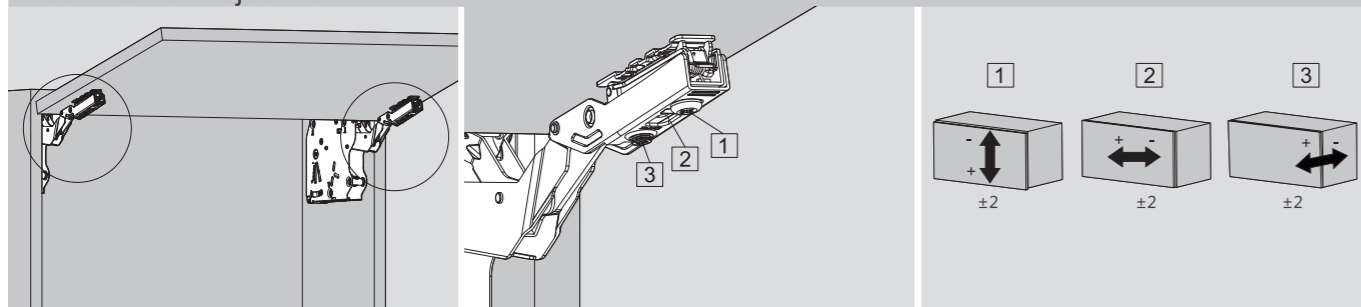


Opening angle restriction clip

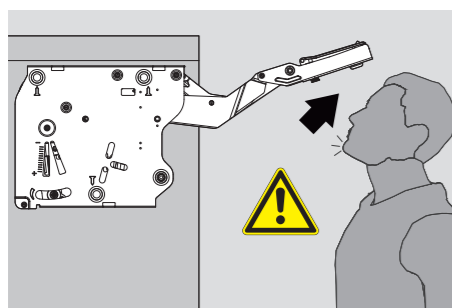
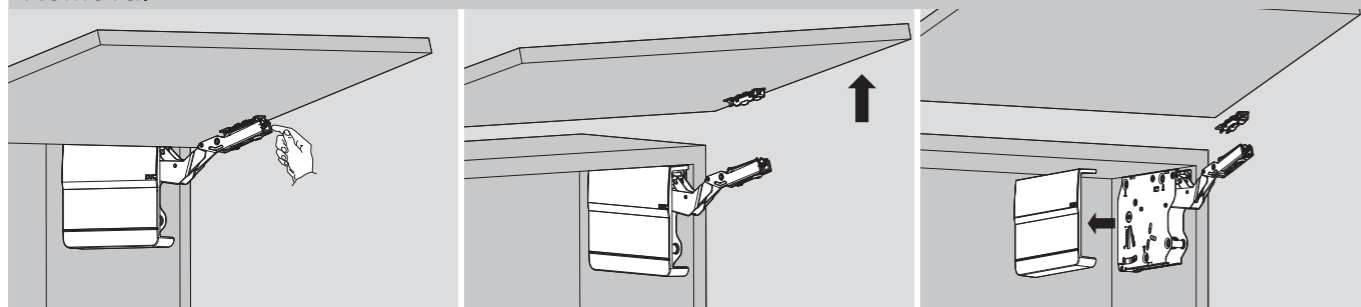


Assembly

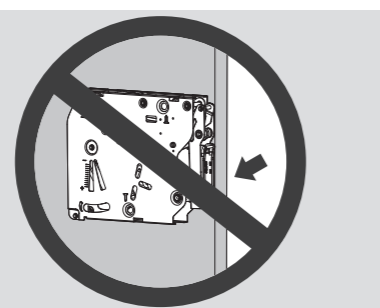
Door Position Adjustment



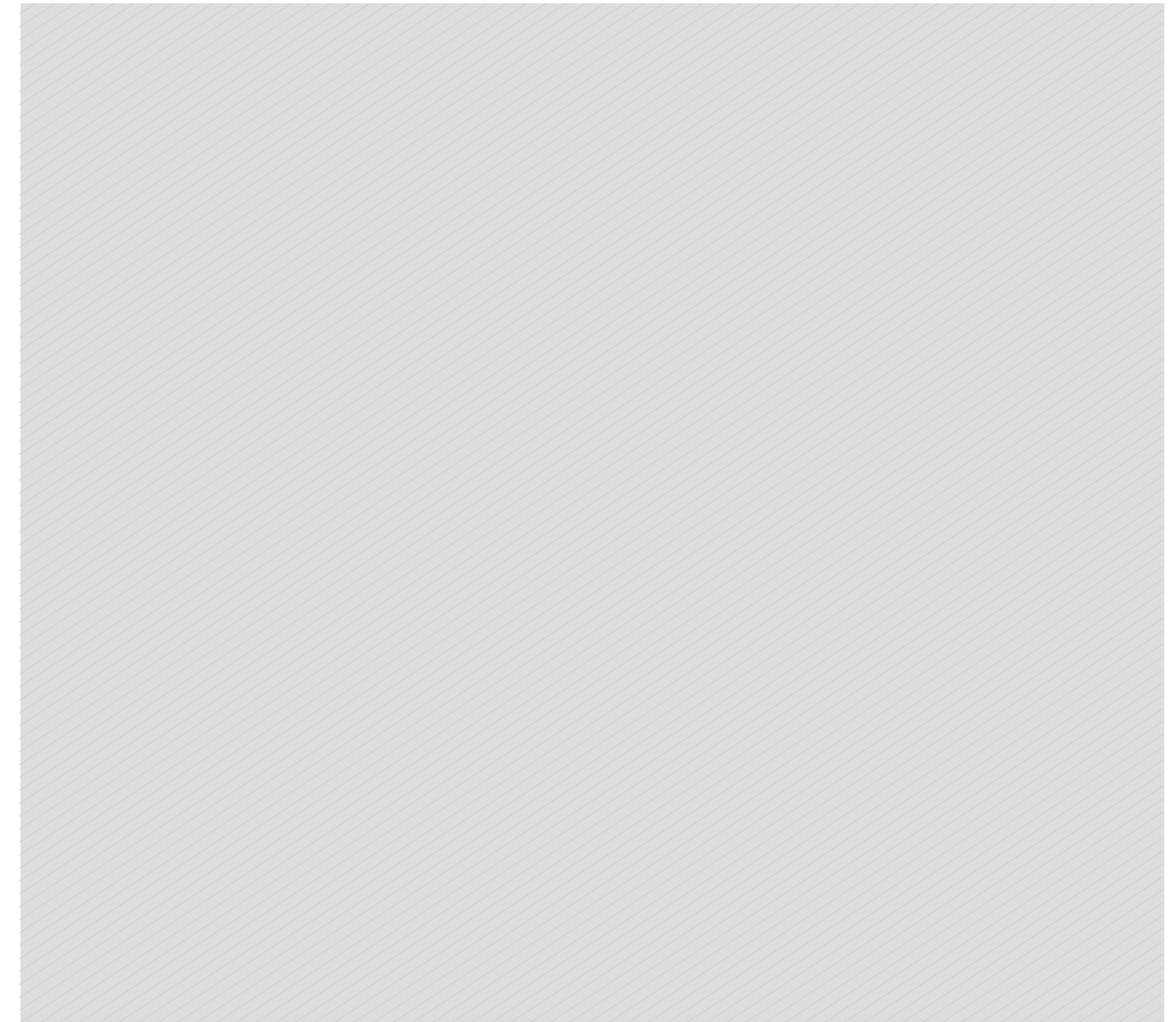
Removal



The arm of this device could spring up and cause injury!



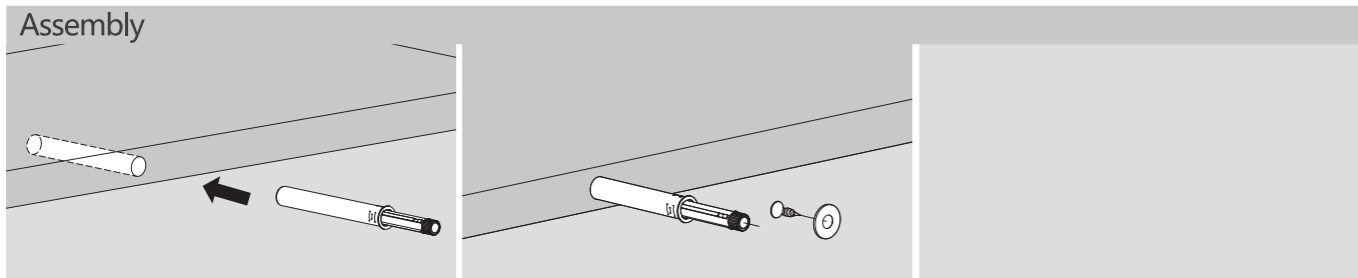
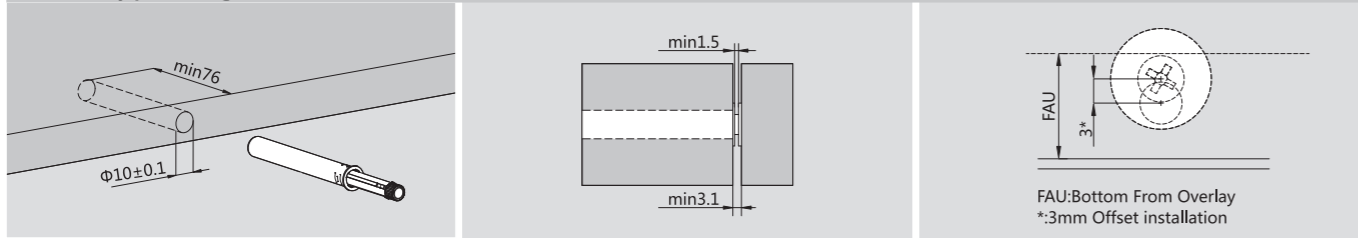
Do not push the arm down without door attached



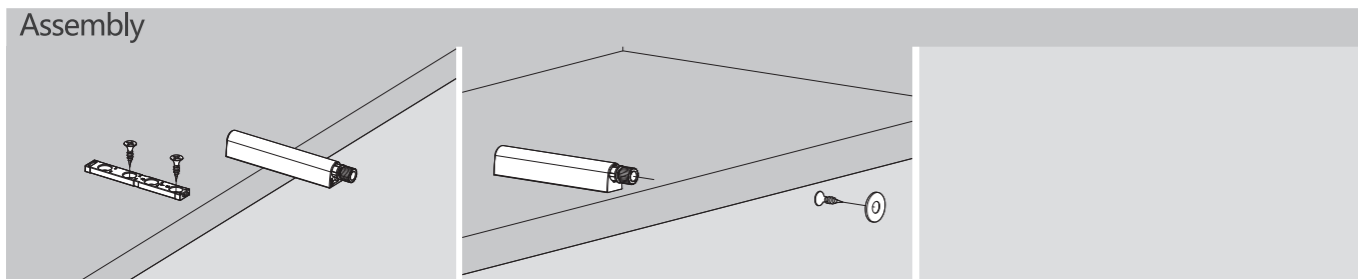
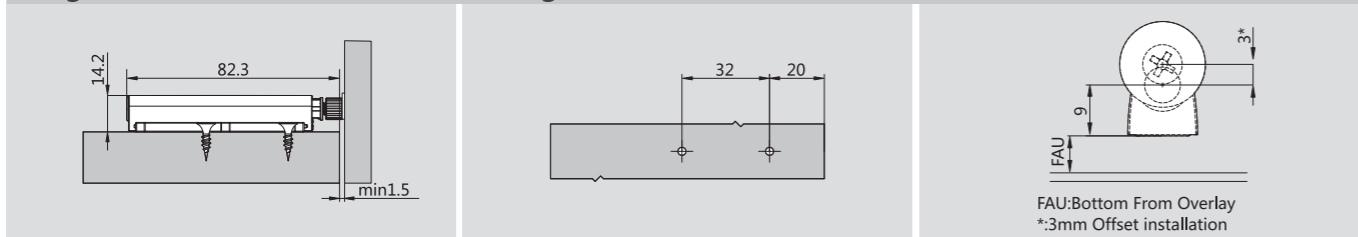


PLANNING

Insert-type Magnetic Push Latch Installation Dimensions(mm)



Magnetic Push Latch with Inline Fixing Plate(mm)



Magnetic Push Latch with Cross Fixing Plate(mm)

